

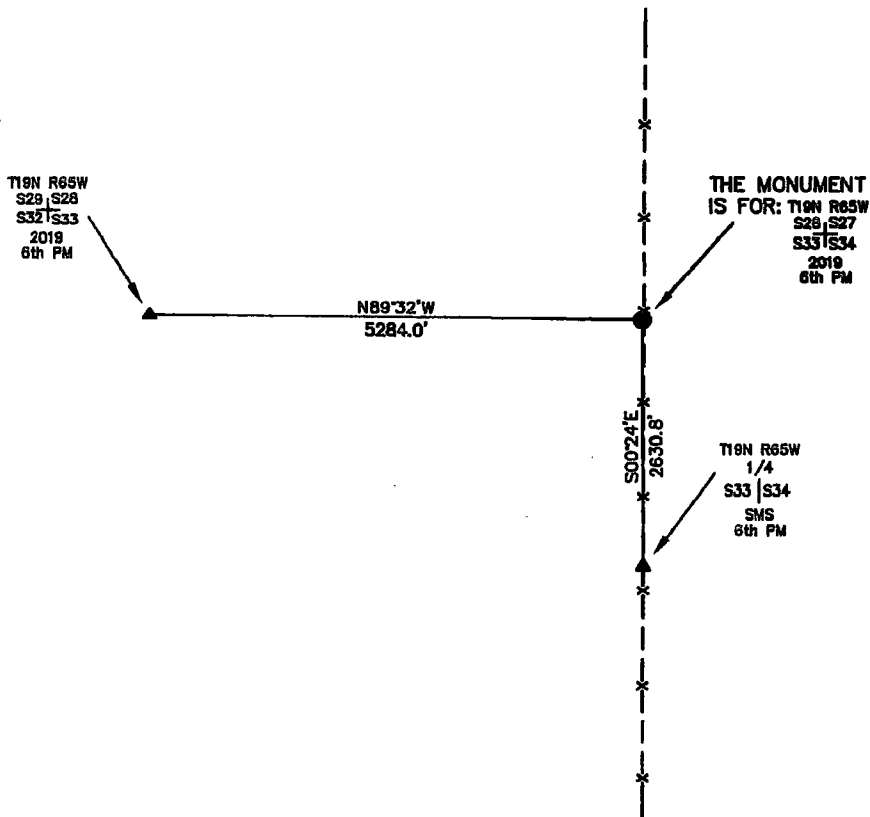
# State of Wyoming Corner Record

## CORNER PERPETUATION AND FILING ACT,

Regulations of the Board of Registration for Professional Engineers and Land Surveyors.)

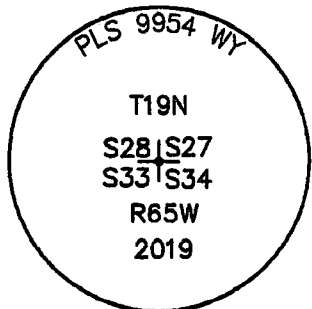
Reverse side of this form may be used if more space is needed.

Record of original survey and citation of source of historic information (if corner is lost or obliterated). Description of corner monumentation evidence found and/or monument and accessories established to perpetuate the location of this corner. Sketch of relative location of monument, accessories, and reference points with course and distance to adjacent corner(s) (if determined in this survey). Method and rationale for reestablishment of lost or obliterated corner.



NOTE:  
LINES SHOWN ARE BETWEEN  
MONUMENTS AND MAY OR  
MAY NOT BE SECTION OR  
SECTION SUBDIVISION LINES.

SET THE MONUMENT FOR THIS CORNER COMMON TO 4 SECTIONS WHICH IS A 2019 2.5" PRIVATE ALUMINUM CAP PROTRUDING 0.8" ABOVE THE GROUND ON A #8 REBAR, ESTABLISHED IN A NORTH AND SOUTH RUNNING FENCE LINE USING SINGLE PROPORTION NORTH AND SOUTH BETWEEN THE E 1/4 CORNER OF SECTIONS 33 AND THE NE CORNER OF SECTION 28. PILED STONES AROUND THE MONUMENT.



Marking on the Cap

### CORNER MONUMENT SYMBOLS

- RECORD IS FOR THIS CORNER MONUMENT.
- ▲ A RELATED CORNER OR WC MONUMENT.

SCALE 1"=2000'  
(EXCEPT IN TRIVIAL CASES)  
BEARINGS ARE RELATED TO WGS 84 WITH GPS OBSERVATIONS  
DRAWN BY: K.H. P.C. L SHANKS  
COUNTY: LARAMIE & GOSHEN

Date of Field Work: 03/28/19 Office Reference: \_\_\_\_\_

Firm/Agency, Address

UELS, LLC

3313 35TH Avenue

Suite B

Evans, Co 80620

Telephone Number: 970-506-1544

This corner record was prepared by me or under my direction and supervision.

SEAL & SIGNATURE



1	2	3	4	5	6	7	8	9	10	11	12	13	14	15	16	17	18	19	20	21	22	23	24	25	
A																									
B																									
C																									
D																									
E																									
F																									
G																									
H																									
J																									
K																									
L																									
M																									
N																									
O																									
P																									
Q																									
R																									
S																									
T																									
U																									
V																									
W																									
X																									
Y																									
Z																									

CORNER COMMON TO 4 SECTIONS

Corner Name: NORTHEAST CORNER OF SECTION 33 Section: 33 T 19 N R 65 W, 6TH P.M. Cross Index No.: V-13

SBRPEPLS/PLSW: March 1994 (CLCR...SJA)



RECP #: 754827

RECORDED 6/10/2019 AT 9:57 AM BK# 2624 PG# 1191  
Debra K. Lee, CLERK OF LARAMIE COUNTY, WY PAGE 1 OF 1